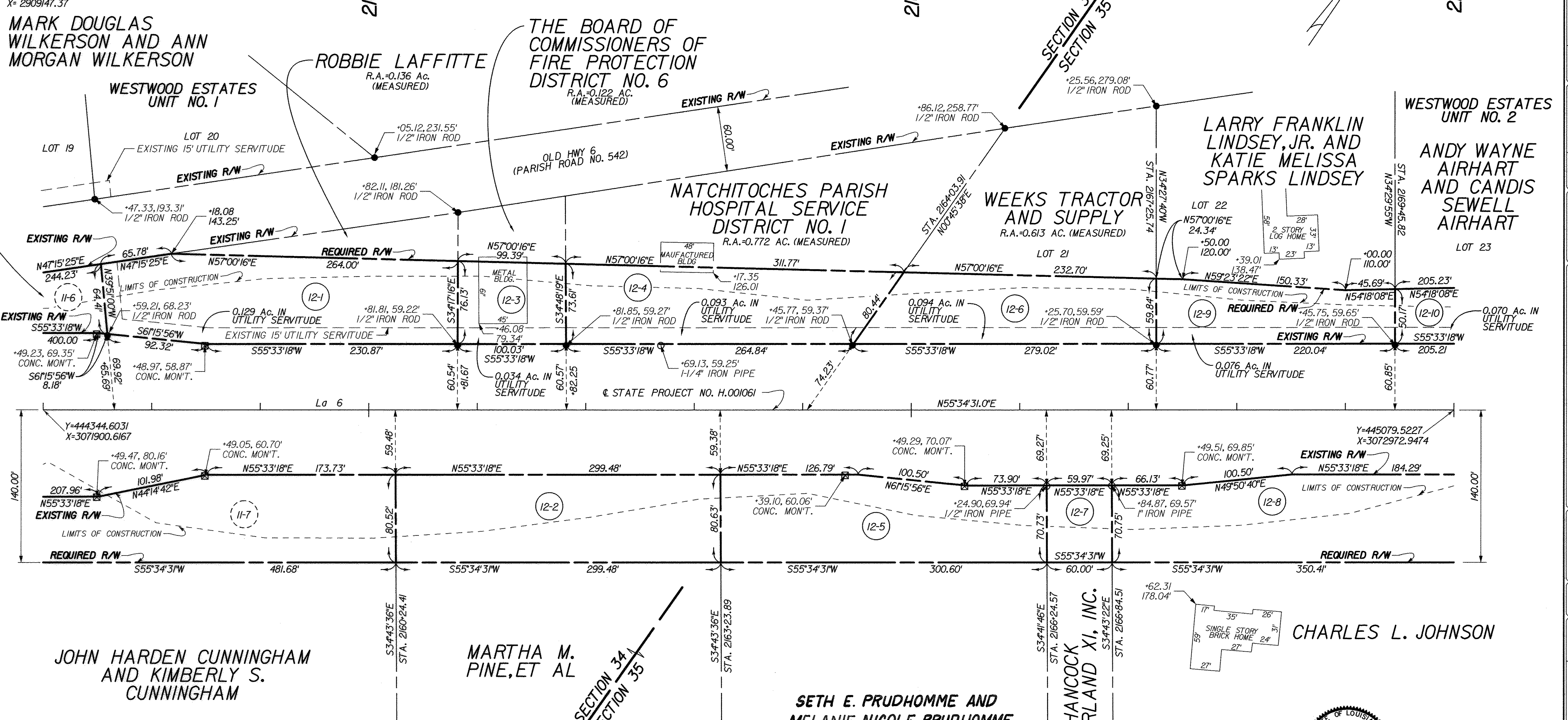


12:21
 01/24/2014
 Final Right-of-Way Map
 P:\212206\MicroStation V8 Final Maps\H.001061.12.dgn

BASE STATIONS:
 DF7048 LEVS LEESVILLE CORS ARP D65396 INSU NORTHWESTERN S.U. CORPS ARP
 LAT= N3°08'32.87762" LAT= N3°45'02.86222"
 LONG= W93°16'08.24289" LONG= W93°05'51.34294"
 Y= 234564.12 Y= 455503.84
 X= 3040253.11 X= 3095085.75
 D67396 SHRV SHREVEPORT CORS ARP
 LAT= N32°25'39.65182"
 LONG= W93°42'16.66366"
 Y= 703294.47
 X= 2909147.37

NORTHWESTERN LAND DISTRICT T9N - R8W SECTION 34 & 35



| PARCEL | OWNER | ACQUISITION | AREA |
|--------|--|------------------------------------|------------------------------------|
| 12-10 | ANDY WAYNE AIRHART AND CANDIS SEWELL AIRHART | COB 493, PG 891 | 07/07/1994 0.247 AC. |
| 12-9 | LARRY FRANKLIN LINDSEY, JR. AND KATIE MELISSA SPARKS LINDSEY | COB 590, PG 635 | 04/18/2005 0.272 AC. |
| 12-8 | CHARLES L. JOHNSON | COB 304, PG 530 | 04/12/1972 0.623 AC. |
| 12-7 | HANCOCK TIMBERLAND XI, INC. | COB 670, PG 685 | 12/26/2012 0.097 AC. |
| 12-6 | WEEKS TRACTOR AND SUPPLY | COB 589, PG 808 | 03/23/2005 0.370 AC. |
| 12-5 | SETH E. PRUDHOMME AND MELANIE NICOLE PRUDHOMME | COB 712, PG 364 | 05/26/2017 0.528 AC. |
| 12-4 | NATCHITOCHES PARISH HOSPITAL SERVICE DISTRICT NO. 1 | COB 595, PG 505 COB 595, PG 501 | 10/27/2005 10/27/2005 0.463 AC. |
| 12-3 | THE BOARD OF COMMISSIONERS OF FIRE PROTECTION DISTRICT NO. 6 | COB 439, PG 436 COB 595, PG 501 | 08/16/1988 10/27/2005 0.171 AC. |
| 12-2 | MARTHA M. PINE, ET AL | COB 476, PG 125 | 08/13/1992 0.554 AC. |
| 12-1 | ROBBIE LAFFITTE | COB 650, PG 827 | 03/03/2011 0.582 AC. |

LEGEND

| | | | | | |
|--|----------------------------|--|---------------------------|--|----------------------------------|
| | EXISTING R/W | | REQUIRED R/W | | RIGHT OF WAY LINE |
| | EXISTING C. of A. | | REQUIRED C. of A. | | CONTROL OF ACCESS |
| | EXIST R/W & EXIST C. of A. | | REQD R/W & REQ'D C. of A. | | RIGHT OF WAY & CONTROL OF ACCESS |
| | | | | | LIMITS OF CONSTRUCTION |
| | | | | | LOT LINE |
| | | | | | APPARENT PROPERTY LINE |
| | | | | | EXISTING SERVITUDE LINE |
| | | | | | SECTION LINE |

NOTES:
 1. ALL PIPES AND MONUMENTS SHOWN HEREON WERE FOUND.
 2. THE COORDINATES AND BEARINGS SHOWN HEREON ARE BASED ON LOUISIANA STATE PLANE COORDINATE SYSTEM, NORTH ZONE (NAD 83) (EPOCH: 2002)
 TO CONVERT FROM GRID BEARINGS TO TRUE BEARINGS USE: -00°21'16.2" \pm
 3. DISTANCES SHOWN ARE HORIZONTAL GROUND DISTANCES.
 TO CONVERT DISTANCES DERIVED FROM COORDINATES SHOWN HEREON TO HORIZONTAL GROUND DISTANCES, USE SCALE FACTOR: 1.000079389

| | | | | | | |
|---|--------------|----------------------------------|-----------------|------------|----------|----------|
| SHEET NUMBER | NATCHITOCHES | PARISH | CONTROL SECTION | DATE | SCALE | PROJECT |
| | 034-05 | | | 01/24/2014 | 1" = 50' | H.001061 |
| COMPUTED | CHECKED | DETAILED | CHECKED | DATE | SCALE | PROJECT |
| KDK | CGG3 | JLW | CGG3 | 01/24/2014 | 1" = 50' | H.001061 |
| | | | | | | |
| RIGHT OF WAY MAP STATE PROJECT NO. H.001061 EL CAMINO EAST/WEST CORRIDOR (EAST SEG.) NATCHITOCHES PARISH La 6 | | | | | | |
| | | | | | | |
| DATE | REVISED | DESCRIPTION | | | | |
| 5-22-2019 | | REVISED OWNERSHIP ON PARCEL 12-5 | | | | |
| | | | | | | |